

Guns at Dahlgren - October 2023

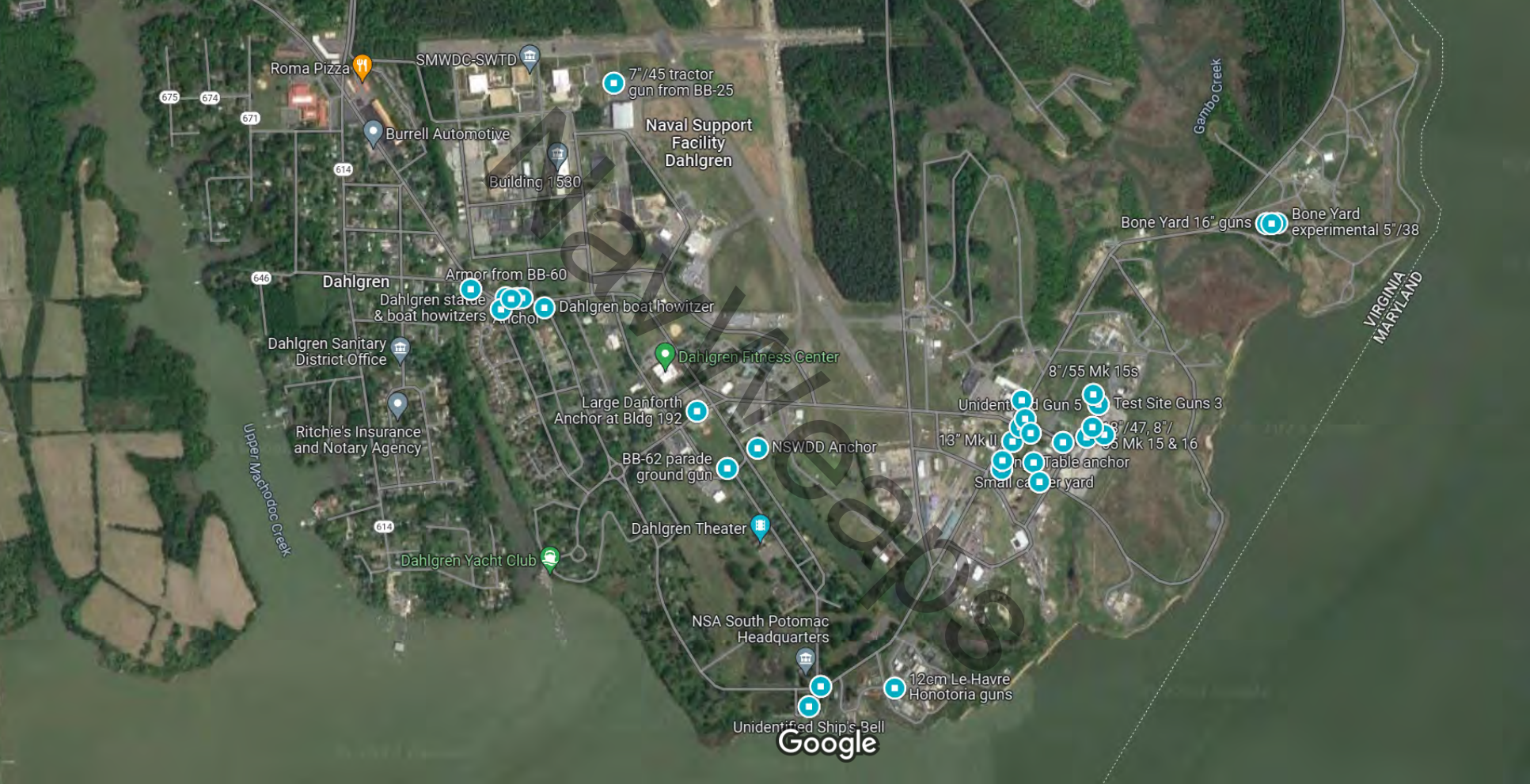
Copyrighted by Evan Dwyer and NavWeaps

Map Key #	Bore	Caliber	Mark	Mod	Serial #	Year	Notes
1	12pdr	-	-	-	Illegible	1864	Boat Howitzer on carriage, smoothbore muzzle-loader
2	12pdr	-	-	-	Illegible	1864	Boat Howitzer on carriage, smoothbore muzzle-loader
3	IX-Inch	-	-	-	Illegible	Illegible	Dahlgren Shell Gun, smoothbore muzzle-loader
4	IX-Inch	-	-	-	Illegible	Illegible	Dahlgren Shell Gun, smoothbore muzzle-loader
5	20pdr	-	-	-	Illegible	1864	Rifled Dahlgren Boat Gun, breechloader
6	16-inch	50-cal	7	Illegible	278L	1942	Formerly middle gun of USS New Jersey (BB-62) turret 2, on test firing mount
7	12cm	-	-	1886	Illegible	1886	Marked "F.C.M. Havre" but clearly of Hontoria Spanish design, trophies from 1898 per NSWCCD Library
8	12cm	-	-	1886	Illegible	1886	Marked "F.C.M. Havre" but clearly of Hontoria Spanish design, trophies from 1898 per NSWCCD Library
9	16-inch	45-cal	VI	Illegible	Illegible	Illegible	240, 243, 461, 462L, 463, 466, 467, & 468 were the eight guns originally here - one is gone, unknown which.
10	16-inch	45-cal	VI	Illegible	Illegible	Illegible	240, 243, 461, 462L, 463, 466, 467, & 468 were the eight guns originally here - one is gone, unknown which.
11	16-inch	45-cal	VI	Illegible	Illegible	Illegible	240, 243, 461, 462L, 463, 466, 467, & 468 were the eight guns originally here - one is gone, unknown which.
12	16-inch	45-cal	VI	Illegible	Illegible	Illegible	240, 243, 461, 462L, 463, 466, 467, & 468 were the eight guns originally here - one is gone, unknown which.
13	16-inch	45-cal	VI	Illegible	Illegible	Illegible	240, 243, 461, 462L, 463, 466, 467, & 468 were the eight guns originally here - one is gone, unknown which.
14	16-inch	45-cal	VI	Illegible	Illegible	Illegible	240, 243, 461, 462L, 463, 466, 467, & 468 were the eight guns originally here - one is gone, unknown which.
15	16-inch	45-cal	VI	Illegible	Illegible	Illegible	240, 243, 461, 462L, 463, 466, 467, & 468 were the eight guns originally here - one is gone, unknown which.
16	8-inch	55-cal	15	3	655	1943	On Test Firing Mount for 10-inch Mk III guns from 1906
17	1-pdr	-	Illegible	Illegible	Illegible	Illegible	Appears to be a Nordenfelt QF mount, ship mount, was obtained from Gulfport, MS ca. 2015
18	Unknown	Unknown	Illegible	Illegible	Illegible	Illegible	Section of a gun, damaged on both sides, rifling intact but no identification markings
19	13" (now 16")	35-cal (now 28.8)	II	Illegible	23	Illegible	Converted for 16-inch proofing at Plate Battery ca. 1923. Formerly on USS Alabama (BB-8)
20	6-inch	53-cal	12	3	691L	1921	
21	6-inch	40-cal	3 or 4	Illegible	Illegible	1898	On 1880s carriage, gun modified ca. 1915 for testing bag charges
22	6-inch	50-cal (now 47)	8 (now D)	Illegible	981L	Illegible	Converted to demonstrator gun for 6"/47 Mk 16 development ca. 1937
23	3-inch	50-cal	22	Illegible	Illegible	Illegible	Probably used to validate autoloader functions in late 1940s
24	13" (now 14")	35-cal (now less)	II	Illegible	33	Illegible	Converted for 14-inch proofing at Plate Battery ca. 1923
25	5-inch	38-cal	Illegible	Illegible	Illegible	Illegible	With breech assembly, no mount
26	5-inch	38-cal	Illegible	Illegible	Illegible	Illegible	With breech assembly, no mount
27	5-inch	38-cal	Illegible	Illegible	Illegible	Illegible	With breech assembly, no mount
28	5-inch	38-cal	Illegible	Illegible	Illegible	Illegible	With breech assembly, no mount
29	5-inch	38-cal	Illegible	Illegible	Illegible	Illegible	With breech assembly, no mount
30	18-inch	47-cal (originally 48)	A (originally Mk 1)	N/A	Illegible	1922	Converted to 16"/56 Mk IV by 1927, re-bored and cut down to 18"/47 in 1941
31	8-inch	55-cal	15	3	680	1943	Marked "Limited Service Only" on breech
32	8-inch	55-cal	16	0	92	Illegible	
33	Unknown	Unknown	Illegible	Illegible	Illegible	Illegible	Has muzzle markings I didn't document - looks like a 76mm from the 1970s-80s
34	16-inch	50-cal (now 70)	VII	-	354 (now EX-No-1)	1943	With breech assembly installed
35	16-inch	50-cal	VII	-	289	1942	
36	16-inch	50-cal	VII	-	277	1942	
37	Unknown	Unknown	Illegible	Illegible	Illegible	Illegible	With Breech assembly, smaller caliber
38	8-inch	55-cal	15	0	853	1944	
39	8-inch	55-cal	15	0	934	1945	
40	8-inch	55-cal	15	0	823	1945	
41	16-inch	50-cal	II	1	96	Illegible	
42	175mm	60-cal	EX-1	0	Illegible	Illegible	Marked as barrel liner
43	16-inch	50-cal	VII	-	271	1941	Smooth bore
44	14-inch	50-cal	Illegible	Illegible	229	Illegible	Has muzzle markings I didn't document - does not have rifling, but breech block is in place (1919 Mk IV Mod 11)
45	16-inch	50-cal	II	1	100	Illegible	
46	8-inch	55-cal	15	0	193	1945	
47	8-inch	-	M2	-	1056	1945	Army Howitzer with breech block, no mount
48	6-inch	47-cal	Mk 16	0	1771	1944	
49	6-inch	Illegible	Illegible	Illegible	2285	Illegible	Appears to say Mk 15 - but Navweaps & Friedman says that Mark was never made
50	6-inch	47-cal	Mk 16	0	2092	1944	
51	6-inch	47-cal	Mk 16	0	Illegible	Illegible	Appears to say serial no. 113
52	6-inch	47-cal	Mk 16	0	856	1936	
53	6-inch	47-cal	Mk 16	0	992	1936	
54	8-inch	55-cal	15	3	684	1945	
55	8-inch	55-cal	15	3	717	1944	
56	8-inch	55-cal	15	3	783	1944	
57	8-inch	55-cal	15	Illegible	541T	1933	
58	8-inch	55-cal	15	Illegible	686	1943	
59	8-inch	55-cal	15	Illegible	530T	1933	

Guns at Dahlgren - October 2023

Copyrighted by Evan Dwyer and NavWeaps

Map Key #	Bore	Caliber	Mark	Mod	Serial #	Year	Notes
60	8-inch	55-cal	15	3	740	1944	
61	8-inch	55-cal	15	0	534	1932	
62	8-inch	55-cal	15	3	603	1942	
63	8-inch	55-cal	15	3	803	Illegible	
64	8-inch	55-cal	16	0	Illegible	Illegible	
65	8-inch	55-cal	16	0	138	Illegible	
66	8-inch	55-cal	15	2	782	Illegible	
67	8-inch	55-cal	15	0	83?	Illegible	Last number of serial number, if it exists, is illegible
68	8-inch	55-cal	16	0	93?	Illegible	Last number of serial number, if it exists, is illegible - may be a 7
69	8-inch	55-cal	16	0	893	Illegible	
70	8-inch	55-cal	16	0	Gone	Gone	Breech heavily damaged, gun type estimated based on size & design
71	8-inch	55-cal	16	0	940	Illegible	Barrel substantially slimmed, all breech markings covered by "X" stamps
72	8-inch	55-cal	15	3	679	1943	
73	8-inch	55-cal	15 (actually says XV)	Illegible	1014	1955	Marked "Limited Service Only" on breech, odd combo of numeral Mark & high S/N
74	8-inch	55-cal	15	3	689	1943	
75	8-inch	55-cal	16	Illegible	5??	1948	Only first digit of S/N is legible
76	8-inch	55-cal	15	Illegible	752	1944	
77	8-inch	55-cal	15	2	737	1945	
78	8-inch	55-cal	15	Illegible	678	1943	
79	8-inch	55-cal	15	Illegible	674	1943	
80	8-inch	55-cal	-	-	-	-	Barrel Liner - has muzzle markings I did not document
81	8-inch	55-cal	-	-	-	-	Barrel Liner - has muzzle markings I did not document
82	8-inch	55-cal	-	-	-	-	Barrel Liner - has muzzle markings I did not document
83	8-inch	55-cal	-	-	-	-	Barrel Liner - has muzzle markings I did not document
84	8-inch	55-cal	15	0	839	None	Marked with "EX" on breech, no year stamping, has Mk IX yoke installed
85	8-inch	55-cal	Illegible	Illegible	Illegible	Illegible	Has Mk IX Mod 2 1934 S/N 2365 yoke installed, looks like a Mk 11 gun
86	14-inch	50-cal	11	3	217	1942	Barrel stamping is the only visible identification marking, contains year on liner. Originally Army M1920M2 S/N 26
87	3"/4"	N/A	A	0	None	None	Breech says "3"/4" Squeeze Bore Gun"
88	14" (now 9")	50-cal (now 98)	Illegible	Illegible	Illegible	Illegible	
89	14-inch (now 14.5")	45-cal	A (originally Mk 12)	0	15L5	Illegible	Modified for ELSIE project as 14.5" Catapult Gun Type A Mod 0 S/N 1, was on USS Pennsylvania (BB-38) at Pearl Harbor
90	8" (now 8.12")	45-cal	A (originally Mk VI)	0	228 (now 3)	1909	
91	5-inch	Unknown	D	0	3175	1940	6-inch breech mechanism Mark VI-5 from 1905 installed. Per Dahlgren, originally 6" but converted ca. 1940 for testing powder.
92	16" (now 24")	45-cal (now less)	A (Originally VI)	1	235	1941	Originally installed on USS South Dakota (BB-57), modified for testing re-entry windscreens (bomb bodies) for Atlas missiles
93	16-inch	50-cal	VII	-	Gone - probably 376	Gone	Breech cut off. Liner protrudes from muzzle. This is either gun 376 or 396. 376 was used in Iowa over-ram tests, heavily damaged.
94	Unknown	Unknown	Unknown	-	Gone	Gone	Heavily damaged breech - very small diameter bore compared to overall size of breech hoop
95	16-inch	50-cal	VII	-	Gone - probably 396	Gone	Breech cut off. This is either gun 376 or 396. 376 was used in Iowa over-ram tests, heavily damaged. 396 has liner cracks.
96	7-inch	45-cal	II	1	63L	1908	On Tractor Mount Mk V, BuOrd # 702, allegedly first gun fired at Dahlgren. On USS Louisiana (BB-19) previously.



Roma Pizza

SMWDC-SWTD

7"/45 tractor gun from BB-25

Burrell Automotive

Naval Support Facility Dahlgren

Building 1530

Garbo Creek

Bone Yard 16" guns Bone Yard experimental 5"/38

Dahlgren

Armor from BB-60

Dahlgren stable & boat howitzers

Dahlgren boat howitzer

Dahlgren Sanitary District Office

Dahlgren Fitness Center

Large Danforth Anchor at Bldg 192

8"/55 Mk 15s

Unidentified Gun 5 Test Site Guns 3

Ritchie's Insurance and Notary Agency

13" Mk II 8"/47, 8"/55 Mk 15 & 16

BB-62 parade ground gun

NSWDD Anchor

Unidentified table anchor

Small ca... er yard

Upper Machopoc Creek

614

Dahlgren Theater

Dahlgren Yacht Club

NSA South Potomac Headquarters

12cm Le Havre Honotoria guns

Unidentified Ship's Bell

VIRGINIA MARYLAND

Google



12th St

12th St

Dahlgren Rd

United States Postal Service

Baldt Stockless Anchor

NSF Dahlgren Pass and ID

Armor from BB-60

3

Anchor

4

Dahlgren muzzle-loading Rifle

2

Dahlgren Rd

Dahlgren statue & boat howitzers

1

Dahlgren Rd

5

Sampson Rd

Dahlgren boat howitzer

Google



1

Dahlgren statue & boat howitzers

2

17329

Armor from BB-60

3

Dahlgren muzzle-loading Rifle

Anchor

4

Dahlgren muzzle-loading Rifle

Google



Green Indoor Pool

NSF Dahlgren Housing Service Center

Dahlgren Navy Housing

Large Danforth Anchor at Bldg 192

Dahlgren Yacht Club

Cannonball Lanes Bowling Center

The Brow Cafe

NSWDD Anchor

6

BB-62 parade ground gun

Google

MaxWeapons

Jenkins Rd

Caffee Rd

Caffee Rd

Golf Ln

Sampson Rd

Golf Ln

Jenkins Rd

Caffee Rd

Dahlgren Rd

Welsh Rd

Welsh Rd

Welsh Rd

Dahlgren Rd

Greenstaple Rd

Greenstaple Rd

Potomac Inn Dr



NSA South Potomac
Headquarters

Baldt Stockless Anchor

Unidentified Ship's Bell

8
12cm Le Havre
Honotoria guns

7

Google



80-83 (Four unfinished tubes) -
61-79 (Nineteen 8" guns) -

54-60 (Seven 8" guns) -

48-53 (Six 6" guns) -

8' /55 Mk 15s

Test Site Guns 3

22 Unidentified Gun 7

21 Unidentified Gun 6

20 Unidentified Gun 5

23 3"/50 Mk 22
Single Mount

16'/50 Mk VIIIs

8'/55 Mk 18 turret

19 13" Mk II

18"/47, 8'/
55 Mk 15 & 16

Range Table anchor

16 8' /55 Mk 15 Bag Gun

Small caliber yard

12-15 16"/45s

Not Photographed or Cataloged

25 26 27 28 5'/38 Guns

9-11

17-18

Thompson Rd

Tisdale Rd

Google

Dahlgren Rd

Norc Ave

Dahlgren Rd

Bldg 111 Dahlgren Rd, Dahlgren VA

Bldg 116

Dahlgren Rd

Tisdale Rd

Holden Rd

Holden Rd

Test Site Ln

Test Site Ln

Test



22



21



20



23



19



Google

Range Table anchor

Unidentified Gun 6

Unidentified Gun 5

3" / 50 Mk 22
Single Mount

6096

6098

Bldg 111 Dahlgren
Rd, Dahlgren VA

Bldg 116

6136

18229

18251

18228

ren Rd

Dahlgren Rd

Dahlgren Rd

Holden Rd

Holden Rd

Holden Rd

Tisdale Rd

Tisdale Rd



Tisdale Rd

Holden Rd

Fur...

-18
-17

-16
8' / 55 Mk 15 Bag Gun

16' / 45s

9
10
11
12
13
14
15

Not Photographed or cataloged

Small caliber yard

24
25
26
27
28
29
5' / 38 Guns

Google

18183

18230

18238

18282

18280

18284

18286

18290



NAVNAV
Google Maps

16°/50 Mk VIIIs

8°/55 Mk 18 turret

18°/47, 8°/
55 Mk 15 & 16

6118

18251

18253

36
35
37
34
32
31
30
33

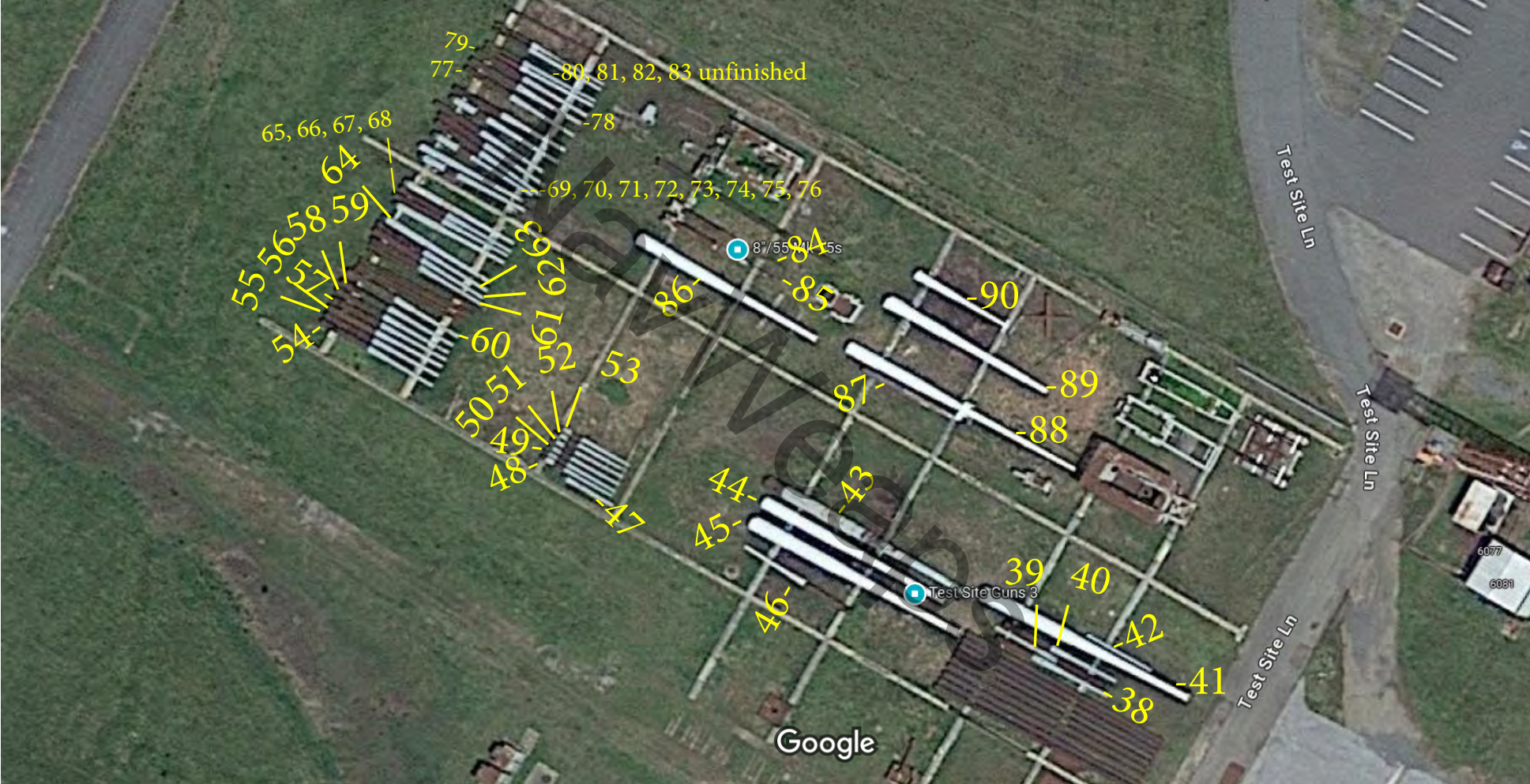
Test Site Ln

Test Site Ln

Test Site Ln

Test Site Ln

Google



79-
77- 80, 81, 82, 83 unfinished

65, 66, 67, 68

64
59
58
56
55

54
53
52
51
50

69, 70, 71, 72, 73, 74, 75, 76

84/55 W/ 15s

86

85

90

53

87

89

88

60

51

49

48

44

45

43

39

40

42

47

46

41

38

Test Site Ln

Test Site Ln

Test Site Ln

Google

6077

6081



Small Caliber Dr

Bone Yard 16" guns

Bone Yard experimental 5"/38

95 94

92

91

Google

The following two map pages were created by James Poynor and are copyrighted by him. They show the locations of the large-caliber guns located at the Main Range at Dahlgren in July 2018. Since that time, the 16"/50 Mark 7 guns s/n 376 and s/n 396 shown on page 15 and one of the eight 16"/45 Mark 6 guns shown on page 16 have been scrapped. These three guns were partially cut up in 2018-19 for use as "slide adapters" as part of the "Harbor and Tributaries Study" (HATS) project by the U.S. Army Corps of Engineers. The unused parts of these guns are still at the Boneyard at Dahlgren.

The 16"/50 Mark 7 gun s/n 376 was notable for having been used for the USS Iowa over-ramming tests in the late 1980s.

14" Gun Mk 11 Mod 3 SN 217
(Originally Army 14" Gun M1920 MII SN 26)

18" Gun Mk A

Project ELSIE 14.5" Catapult Gun Type A Mod 0
SN 1, Originally 14" Gun Mk 12 Mod 0 SN 15L5
(was on BB-38 during Pearl Harbor attack)

16" Gun Mk 7
SN 376

16" Gun Mk 7
SN 277

16" Gun Mk 7 SN 271
(smooth-bored)

16" Gun Mk 7
SN 289

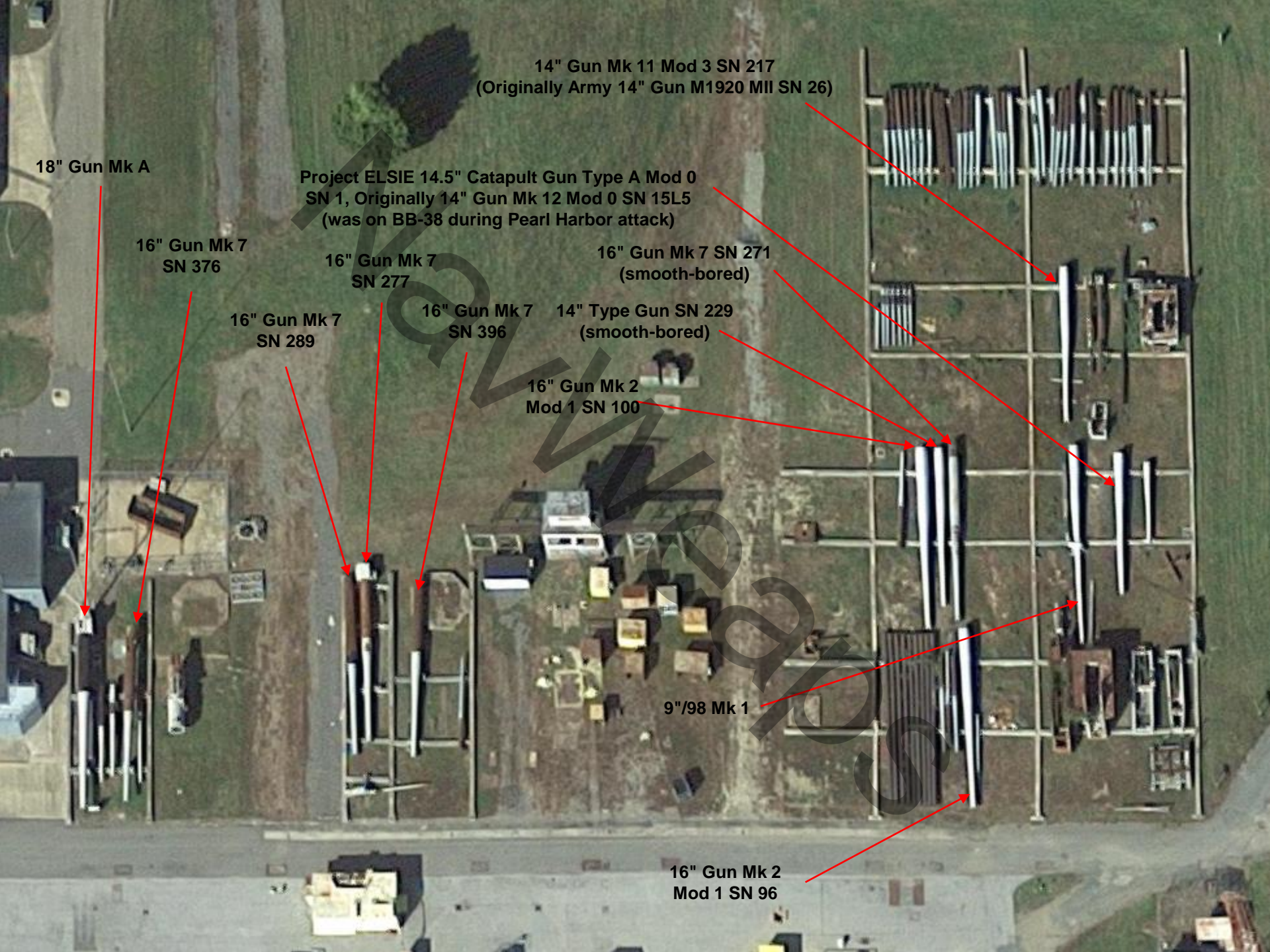
16" Gun Mk 7
SN 396

14" Type Gun SN 229
(smooth-bored)

16" Gun Mk 2
Mod 1 SN 100

9"/98 Mk 1

16" Gun Mk 2
Mod 1 SN 96



Tisdale Rd

Tisdale Rd

Tisdale Rd

8"/55 Gun in modified 10"
Slide Mk 5. On 10" Proving
Ground Girder

16" Gun Mk A
(originally 13" Gun Mk 2, SN 23,
completed in August, 1899.
Delivered to USS Alabama, BB-8, by
October of 1900)

Eight 16" Mark 6
Guns
(two without screw
box liners)

